



INSTALLATION GUIDE

2006-2008

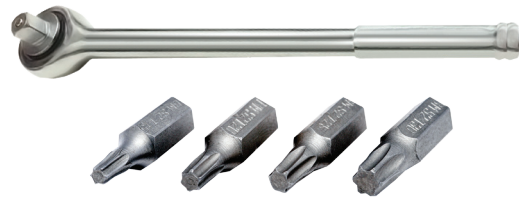
**DODGE RAM 1500
PROJECTOR HEADLIGHTS**

2006-2009

**DODGE RAM 2500/3500
PROJECTOR HEADLIGHTS**

Tool required :

- 10mm Socket Wrench/Ratchet
- T25 Torx

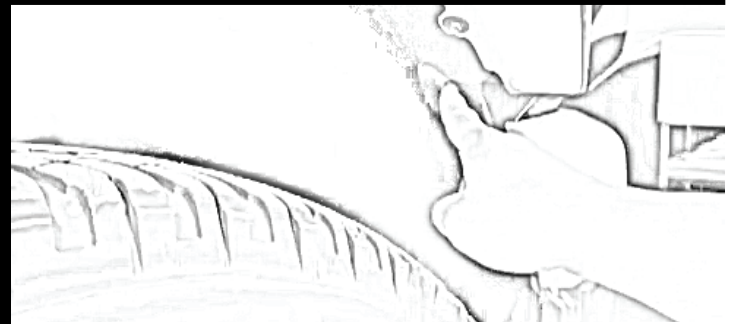


If you are unfamiliar with your vehicle or inexperienced with aftermarket upgrades, professional installation is highly recommended.



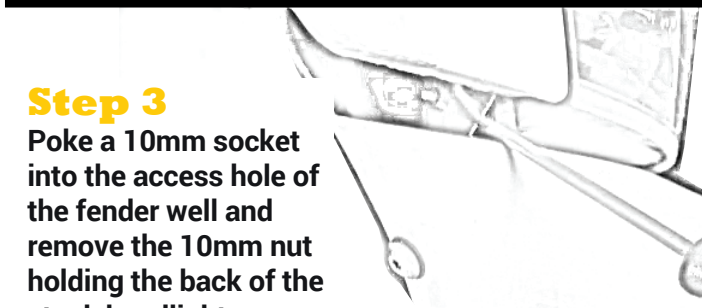
Step 1

Lift the hood, and remove the T25 Torx screws that hold the stock headlight (2 screws).



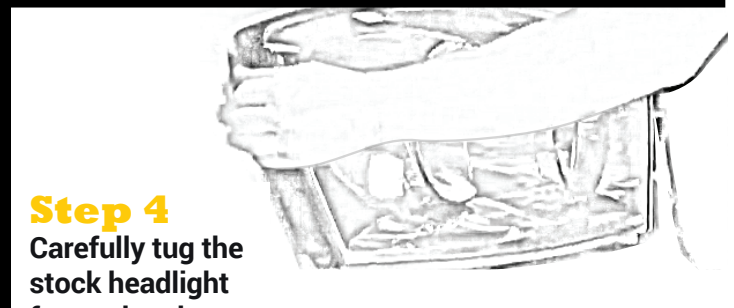
Step 2

Remove the rubber access plug on the wheel well.



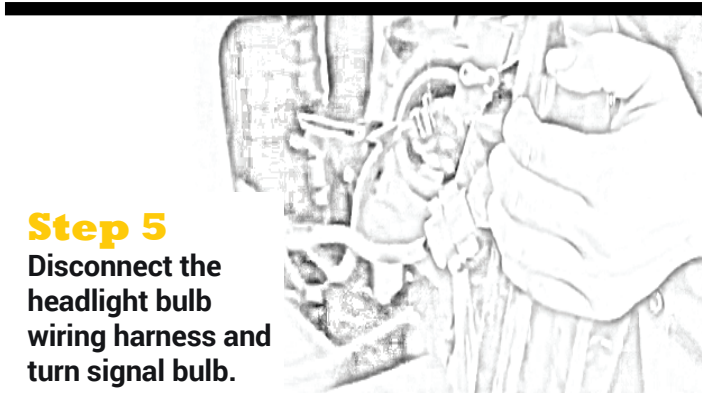
Step 3

Poke a 10mm socket into the access hole of the fender well and remove the 10mm nut holding the back of the stock headlight.



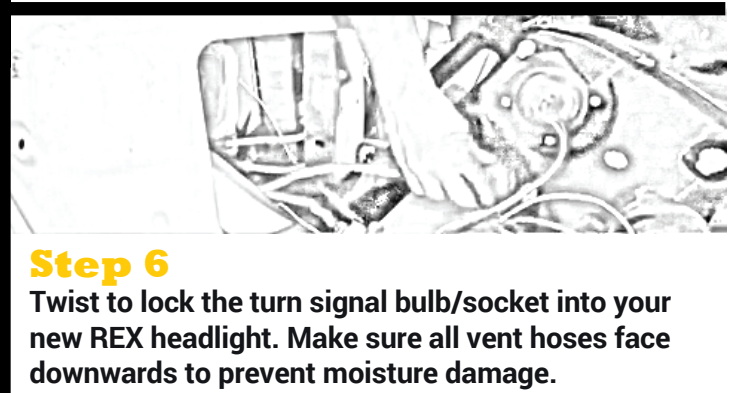
Step 4

Carefully tug the stock headlight forward and out.



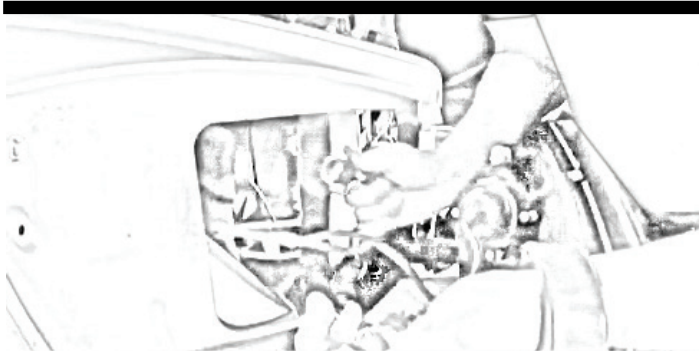
Step 5

Disconnect the headlight bulb wiring harness and turn signal bulb.



Step 6

Twist to lock the turn signal bulb/socket into your new REX headlight. Make sure all vent hoses face downwards to prevent moisture damage.

**Step 7**

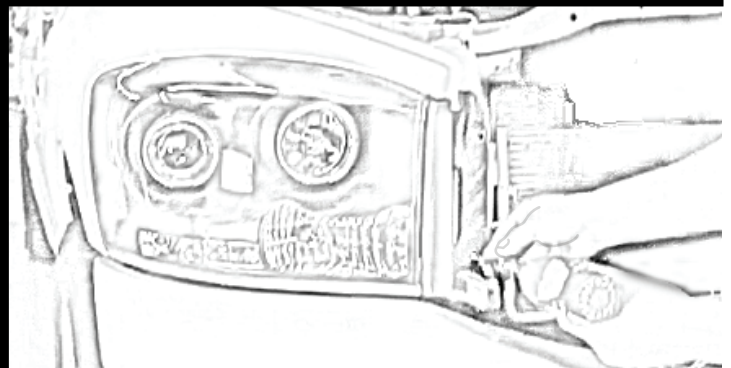
Remove the stock headlight bulb from the socket.

**Step 8**

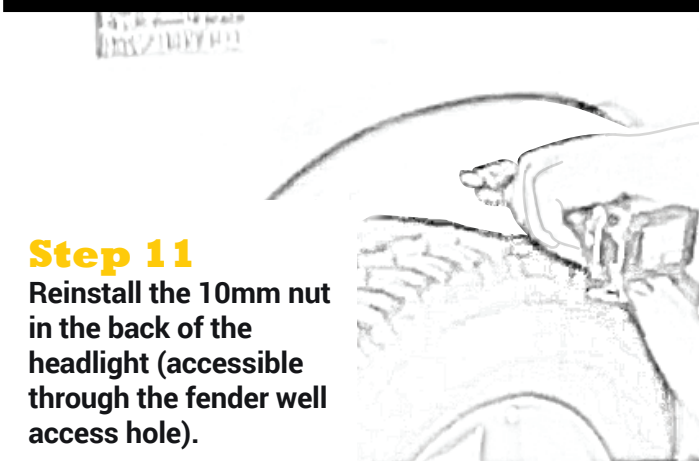
Connect the stock headlight harness to the wiring harness of the REX headlight.

**Step 9**

Seat the REX headlight snugly in your vehicle.

**Step 10**

Reinstall the T25 Torx screws (2 screws).

**Step 11**

Reinstall the 10mm nut in the back of the headlight (accessible through the fender well access hole).

**Step 12**

Reinstall the fender well access plug.

Step 13

Shut the hood. You are now ready to go with your new REX headlights.





Disclaimer

REX Lighting is not liable for damages, injuries, or death while installing the product. The Installation Guide is intended as assistance to reduce installation time. REX Lighting assumes no responsibility for improper installation. If you are unfamiliar with your vehicle or inexperienced with aftermarket upgrades, please seek professional installation.