

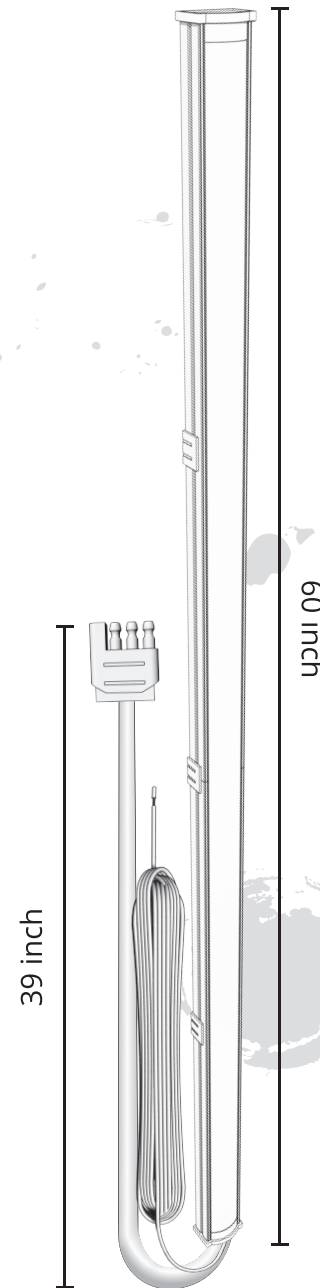
DISCLAIMER

OPT7 Lighting is not liable for damages or personal injuries while installing this product. The Installation Guide is intended as assistance to reduce setup time. OPT7 Lighting assumes no responsibility for improper installation. If you are unfamiliar with your vehicle or inexperienced with aftermarket upgrades, please seek professional assistance.

3 MONTH WARRANTY

OPT7

IGNITE INSPIRATION



OPT7

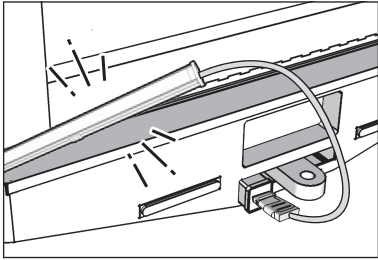
**REDLINE
TAILGATE
CHOICE**

INSTALLATION GUIDE

**WHAT'S
INCLUDED**

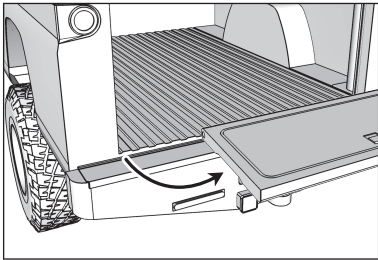
Redline LED Bar X **1**

INSTALLATION



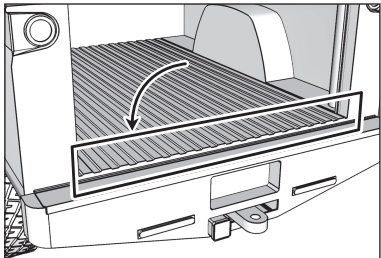
STEP 1

Test the Redline LED Bar for function before mounting on vehicle.



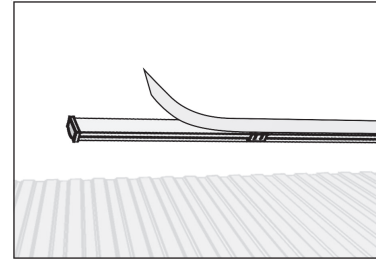
STEP 2

Remove tailgate from vehicle, if necessary.



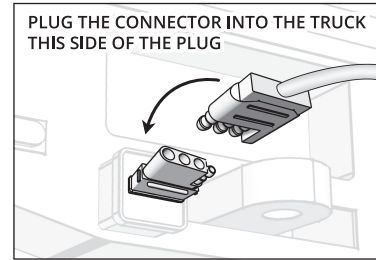
STEP 3

Thoroughly clean the area where the Redline LED Bar will be mounted.



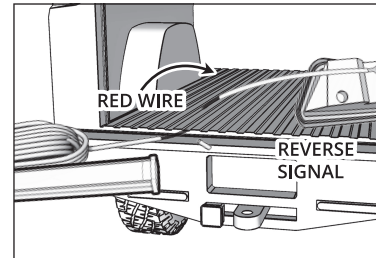
STEP 4

On the Redline LED Bar, peel the back off of the adhesive and apply firmly to the cleaned area.



STEP 5

Plug the 4-pin flat connector into the proper receptacle on the vehicle.



STEP 6

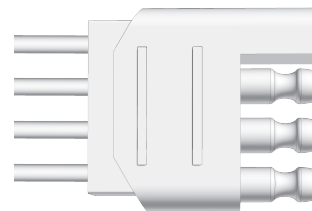
Splice the red wire coming from the Redline LED Bar into the reverse signal on the vehicle.

STEP 7

Optional: If hard-wiring, use image below to identify wire color functions and pair them to appropriately identified wires on vehicle.

TO REDLINE LED BAR

Ground
Running Light
Left Turn & Brake
Right Turn & Brake



TRAILER HARDWARE HARNESS

White/Ground
Brown/Running Light
Yellow/Left Turn & Brake
Green/Right Turn & Brake

